

1 General

The following amendments are hereby made an integral part of the Contract Documents for the above project, including all applicable sub-contractors affected.

1.1 NOTES

- .1 Indicate the receipt of this Addendum on the specified Tender Form as required.
- .2 Included attachments are as follows:
 - .1 Mechanical & Electrical Drawings dated August 22, 2023, from Suppa Engineering (5 pages, 24"x36" format).

1.2 GENERAL CLARIFICATIONS

- .1 None.

2 Amendments

2.1 PROJECT MANUAL SPECIFICATIONS

- .1 None.

2.2 PROJECT DRAWINGS

- .1 Mechanical and Electrical Drawings:

DELETE: Mechanical and electrical drawings dated June 28, 2023, from Suppa Engineering, listed below:
M101 PLUMBING & VENTILATION - LEGEND, NOTES, SCHEDULES, AND SPECS
M102 PLUMBING & VENTILATION - FLOOR PLANS
M103 PLUMBING & VENTILATION - DETAILS
E101 LEGEND, NOTES, SCHEDULES AND SPECIFICATION
E102 POWER AND LIGHTING - FLOOR PLANS

REPLACE: Mechanical and electrical drawings dated August 22, 2023, from Suppa Engineering, as listed below:
M101 PLUMBING & VENTILATION - LEGEND, NOTES, SCHEDULES, AND SPECS
M102 PLUMBING & VENTILATION - FLOOR PLANS
M103 PLUMBING & VENTILATION - DETAILS
E101 LEGEND, NOTES, SCHEDULES AND SPECIFICATION
E102 POWER AND LIGHTING - FLOOR PLANS

End of Addendum

Part 1MECHANICAL GENERAL CONDITIONS

1. THE MECHANICAL CONTRACTOR SHALL FURNISH ALL LABOUR, MATERIALS, TOOLS, EQUIPMENT, ETC. REQUIRED TO COMPLETE ALL WORK SHOWN ON THE DRAWINGS AND SPECIFIED HEREIN.

2. THE WORK SHALL BE IN ACCORDANCE WITH RULES AND REGULATIONS OF ALL AUTHORITIES HAVING JURISDICTION OVER THE WORK.

3. THE CONTRACTOR SHALL PROVIDE ANY SMALL ITEMS OF WORK NOT SPECIFICALLY CALLED FOR BUT REQUIRED TO COMPLETE THE INTENDED INSTALLATION.

4. ONLY COMMERCIAL GRADE EQUIPMENT AND MATERIALS SHALL BE INSTALLED.

5. THE ENGINEER RESERVES THE RIGHT TO APPROVE THE QUALITY OF MATERIAL AND WORKMANSHIP, AND TO CALL FOR ANY TEST WHICH HE/SHE DEEMS NECESSARY DURING THE PROCESS OF THE WORK AND A COMPLETE TEST OF EACH SYSTEM AT COMPLETION OF THE WORK. THE COSTS OF SUCH TESTS SHALL BE INCLUDED IN THE TENDER PRICE.

Part 2PERMITS AND INSPECTION

1. THE CONTRACTOR SHALL BE RESPONSIBLE FOR AND SHALL OBTAIN ALL NECESSARY PERMITS, INSPECTIONS, CERTIFICATES, ETC. REQUIRED BY ALL AUTHORITIES HAVING JURISDICTION OVER THIS WORK AND SHALL PAY FOR SAME.

2. COSTS FOR PERMITS, INSPECTIONS, ETC. SHALL BE INCLUDED IN THE TENDER PRICE.

3. ALL PERMITS SHALL BE DELIVERED TO THE OWNER'S REPRESENTATIVE AS SOON AS THEY BECOME AVAILABLE.

Part 3SCOPE OF WORK

1. THE WORK SHALL CONSIST OF BUT NOT LIMITED TO PLUMBING AND VENTILATION MODIFICATIONS IN CONJUNCTION WITH THE MINOR INTERIOR RENOVATION.

Part 4AS-BUILT DRAWINGS

1. CONTRACTOR SHALL KEEP A SEPARATE SET OF REDLINE DRAWINGS ON SITE AND NOTE ALL CHANGE AND DEVIATIONS FROM THE ORIGINAL DESIGN.

2. TWO SETS OF THESE PLANS SHOWING ALL AS BUILT CONDITIONS SHALL BE FORWARDED TO THE OWNER AT THE COMPLETION OF THE CONTRACT AND BEFORE APPLYING FOR FINAL PAYMENT.

Part 5SHOP DRAWINGS

1. SUBMIT ELECTRONIC COPIES OF MANUFACTURER'S SHOP DRAWINGS FOR REVIEW BY THE ENGINEER PRIOR TO PLACING ORDER FOR ALL EQUIPMENT AND MATERIAL RELATED TO THIS CONTRACT.

2. SHOP DRAWINGS TO INCLUDE PRODUCT CHARACTERISTICS, PERFORMANCE CRITERIA, PHYSICAL SIZE, FINISH, AND LIMITATIONS.

Part 6EXAMINATION OF THE SITE

1. THE CONTRACTOR SHALL VISIT THE SITE OF THE PROJECT AND FAMILIARIZE THEMSELVES WITH THE SCOPE OF WORK.

2. ANY DEVIATION AND/OR CONFLICTS ON SITE SHALL BE REPORTED TO THE ENGINEER PRIOR TO SUBMITTING THE TENDER.

3. ALL DIMENSIONS, CONFIGURATIONS, EQUIPMENT LOCATIONS, ETC. TO BE CHECKED AND VERIFIED ON SITE.

Part 7CONSTRUCTION SCHEDULE

1. MECHANICAL CONTRACTOR SHALL SCHEDULE AND PERFORM HIS/HER WORK TO MEET THE COMPLETION SCHEDULE AS SET OUT BY THE OWNERS. ANY OVERTIME WORK SHALL BE INCLUDED IN HIS TENDER.

2. CONTRACTOR SHALL ADVISE OF ANY SHUTDOWNS OR DISRUPTIONS OF SERVICES WITH A MINIMUM OF 48 HOURS NOTICE.

Part 8CHANGE CONTROL

1. NO ADDITIONAL MONEY OVER THE CONTRACT PRICE SHALL BE PAID UNLESS AN APPROVED CHANGE ORDER HAS BEEN ISSUED BY THE ENGINEER.

2. CLAIMS FOR EXTRAS SHALL BE SUBMITTED WITH A COMPLETE BREAKDOWN OF MATERIAL, LABOUR, HOURLY RATES, ETC.

Part 9CLEAN-UP

1. CONTRACTOR SHALL BE RESPONSIBLE TO PERIODICALLY REMOVE ALL DEBRIS AND TO KEEP THIS AREA CLEAN AT ALL TIMES.

Part 10EQUIPMENT AND MATERIAL

1. ALL MATERIALS USED ON THIS PROJECT SHALL BE NEW AND WITHOUT BLEMISH OR DEFECT.

2. ALL MATERIAL AND EQUIPMENT SHALL BE OF THE TYPE SUBJECT TO FACTORY MUTUAL, UNDERWRITER'S LABORATORIES OF CANADA OR CANADIAN STANDARDS ASSOCIATION, INSPECTION AND APPROVAL AND SHALL BEAR UL/C OR CSA LABELS.

Part 11TESTING

1. PERFORM TESTS ON EACH SYSTEM TO THE SATISFACTION OF THE ENGINEER AND SUBMIT TEST RESULTS FOR APPROVAL PRIOR TO THE FINAL ACCEPTANCE OF WORK AND IN CONFORMANCE WITH THE AUTHORITY HAVING LOCAL JURISDICTION.

Part 12DEMONSTRATION OF SYSTEM

1. CONTRACTOR TO DEMONSTRATE THE FUNCTION AND OPERATION OF EACH SYSTEM TO THE MAINTENANCE STAFF OR THE OWNER'S REPRESENTATIVE.

Part 13IDENTIFICATION

1. ALL PIPING AND DUCTWORK TO BE LABELED AND PAINTED IN CONFORMANCE WITH CGSB 24-GP-3A.

2. ALL LABELING TO BE INSTALLED ON LONG STRAIGHT RUNS CLEARLY VISIBLE AND UNOBSTRUCTED.

Part 14COORDINATION

1. CONTRACTOR IS RESPONSIBLE FOR COORDINATING INSTALLATION OF EQUIPMENT, DUCTWORK, PIPING, DIFFUSERS, GRILLES, ETC. WITH ALL OTHER TRADES PRIOR TO ROUGH-IN AND INSTALLATION.

Part 15ACCESSIBILITY

1. ALL WORK SHALL BE INSTALLED SO AS TO BE READILY ACCESSIBLE FOR OPERATION, MAINTENANCE AND REPAIRS.

2. MANUFACTURERS INSTALLATION REQUIREMENTS TO BE REVIEWED - PROVIDE ALL REQUIRED SERVICE SPACE ALLOCATIONS FOR ALL EQUIPMENT INSTALLED UNDER THIS CONTRACT.

Part 16RESPONSIBILITY

1. THIS TRADE SHALL BE RESPONSIBLE FOR HIS/HER WORK UNTIL COMPLETION AND FINAL ACCEPTANCE, AND FOR REPLACING ANY ITEM THAT MAY BE DEFECTIVE, DAMAGED, LOST OR STOLEN WITHOUT ANY ADDITIONAL COST TO THE OWNER OR DELAY TO THE COMPLETION OF THE PROJECT.

Part 17WARRANTY

1. CONTRACTOR SHALL WARRANT ALL WORK AND APPARATUS INSTALLED UNDER THIS CONTRACT AGAINST DEFECTS OR WORKMANSHIP FOR A PERIOD OF ONE YEAR AFTER ACCEPTANCE BY THE ENGINEER AND THE OWNER.

Part 18FIREPROOFING

1. ALL PENETRATIONS THROUGH FIRE RATED ASSEMBLIES SHALL BE FIRE STOPPED WITH APPROVED FIRE STOP SYSTEM TO SUIT FIRE RATED ASSEMBLY.

2. INSTALL AS PER MANUFACTURER'S RECOMMENDATIONS AND INSTRUCTIONS.

3. SUBMIT FIRE STOP SYSTEM SHOP DRAWINGS FOR REVIEW BY ENGINEER PRIOR TO COMPLETING WORK.

Part 19CUTTING, PATCHING, AND PAINTING

1. ALL CUTTING, PATCHING, AND PAINTING FOR MECHANICAL WORK SHALL BE DONE BY THE MECHANICAL CONTRACTOR.

2. OBTAIN ANY/ALL APPROVALS PRIOR TO CUTTING STRUCTURAL MEMBERS.

3. UPON REMOVAL OF PIPING/DUCTWORK, THERMOSTATS, CONTROL WIRING, ETC. PATCH ALL HOLES CREATED FROM REMOVALS AND MATCH EXISTING FINISHES.

4. PROVIDE STEEL PIPE SLEEVES WHERE PIPING PASSES THROUGH MASONRY OR CONCRETE.

5. PROVIDE FIRE STOP SYSTEM CAULKING AS PER MANUFACTURER'S RECOMMENDATIONS FOR ALL PENETRATIONS THROUGH FIRE RATED ASSEMBLIES.

6. ALL PENETRATIONS THROUGH EXTERIOR WALL ASSEMBLIES TO BE INSULATED AND SEALED TO MAKE WEATHER TIGHT. SEAL WITH NON-HARDENING MASTIC.

Part 20ACCESS DOORS

1. PROVIDE ACCESS DOORS FOR ALL CONCEALED VALVES, EQUIPMENT, CONTROLS, ETC.

2. LOCATE ACCESS DOORS TO ALLOW FOR PROPER OPERATION, INSPECTION, ADJUSTMENT AND SERVICING.

3. ACCESS DOORS TO BE FLUSH MOUNTED. PROVIDE MINIMUM 24"x24" WHERE FULL BODY ACCESS IS REQUIRED, AND MINIMUM 12"x12" WHERE HAND ENTRY IS REQUIRED.

4. COORDINATE FINISH WITH ENGINEER. PRIMED AND PAINTABLE STEEL ACCESS DOORS TO BE PROVIDED IN ALL AREAS.

Part 21OPERATIONAL AND MAINTENANCE MANUALS

1. MECHANICAL CONTRACTOR SHALL PROVIDE TO THE OWNER THREE (3) COPIES OF OPERATING AND MAINTENANCE INSTRUCTIONS FOR ALL EQUIPMENT SUPPLIED UNDER THIS CONTRACT.

Part 22INSULATION AND JACKETING

1. INSULATION AND JACKETING TO HAVE MAXIMUM FLAME SPREAD RATING OF 25 AND MAXIMUM SMOKE DEVELOPMENT RATING OF 50 WHEN TESTED IN ACCORDANCE WITH CAN/ULC S102.

2. INSULATE PIPING WITH RIGID MINERAL FIBRE SLEEVING WITH FOILCRAFT LAMINATE PACKET WITH OPEN MESH FIBRE SCIM REINFORCING. INSULATION THICKNESS AS PER ASHRAE 90.1-2013 TABLES 6.8.3.1 AND 6.8.3.2.

3. EXPOSED PIPING TO BE PVC JACKETED AND LABELED.

4. FRESH AIR INTAKES, FIRST 10' OF EXHAUST DUCTWORK, AND HRV INTAKE AND EXHAUST FULL LENGTH TO BE INSULATED WITH 1" THICK THERMAL INSULATION AND ALUMINUM FOIL JACKET - INSULATION TO BE FLEXIBLE FOR ROUND DUCTWORK, RIGID FOR RECTANGULAR DUCTWORK.

5. EXPOSED DUCTWORK IN MECHANICAL ROOMS TO BE CANVAS WRAPPED.

Part 23METAL DUCTS - LOW PRESSURE TO 500 PA

1. GALVANIZED INDOOR AIR QUALITY AS PER ASHRAE STANDARDS.

2. LOCK FORMING QUALITY: TO ASTM A 653/A653M, 290 ZINC COATING.

3. THICKNESS, FABRICATION AND REINFORCEMENT: TO ASHRAE AND SMACNA.

4. JOINTS: TO ASHRAE AND SMACNA OR PROPRIETARY MANUFACTURED DUCT JOINT.

5. HANGERS: GALVANIZED STEEL ANGLE WITH GALVANIZED STEEL RODS TO ASHRAE AND SMACNA.

Part 24FLOOR DRAINS

1. FINISHED AREAS:

1. LACQUERED CAST IRON FLOOR DRAIN WITH ANCHOR FLANGE, WEEPHOLES, AND STANDARD HEAVY DUTY 5" DIAMETER, POLISHED STAINLESS STEEL STRAINER. EQUAL TO MIFAB SERIES F1000-3 FOR MEMBRANE FLOORS - EQUAL TO MIFAB F1000-C-3.

2. TILED AREAS:

1. LACQUERED CAST IRON FLOOR DRAIN WITH ANCHOR FLANGE, WEEPHOLES, AND STANDARD HEAVY DUTY SQUARE POLISHED STAINLESS STEEL STRAINER. EQUAL TO MIFAB SERIES F1100-5 (*) 3" (1" STRAINER SIZE) FOR MEMBRANE FLOORS - EQUAL TO F1100-5 (*) 3-C (1" STRAINER SIZE)

3. NON-FINISHED AREAS:

1. LACQUERED CAST IRON FLOOR DRAIN WITH ANCHOR FLANGE, WEEPHOLES, AND STANDARD HEAVY DUTY 5" DIAMETER, DUCTILE IRON STRAINER. EQUAL TO MIFAB SERIES F1100-4 FOR MEMBRANE FLOORS EQUAL TO MIFAB F1100-C-4

4. FLOOR DRAIN WITH SURFACE MEMBRANE CLAMP:

1. LACQUERED CAST IRON FLOOR DRAIN WITH ANCHOR FLANGE, WEEPHOLES, AND "FC" 7" DIAMETER HEAVY DUTY POLISHED STAINLESS STEEL STRAINER WITH SURFACE MEMBRANE CLAMP. EQUAL TO MIFAB SERIES F1100-FC-3 FOR MEMBRANE FLOORS EQUAL TO MIFAB F1100-C-FC-3

5. FLOOR DRAIN WITH FUNNEL:

1. LACQUERED CAST IRON FLOOR DRAIN WITH ANCHOR FLANGE, WEEPHOLES, AND STANDARD 4" X 9" (102 X 229) OVAL SATIN FINISHED NICKEL BRONZE OPEN THROAT FUNNEL. EQUAL TO MIFAB SERIES F1100-EG FOR MEMBRANE FLOORS EQUAL TO MIFAB F1100-C-EG SERIES

2. LACQUERED CAST IRON FLOOR DRAIN WITH ANCHOR FLANGE, WEEPHOLES AND STANDARD 4" (102) ROUND SATIN FINISHED NICKEL BRONZE FUNNEL ASSEMBLY. EQUAL TO MIFAB SERIES F1100-FF FOR MEMBRANE FLOORS EQUAL TO MIFAB F1100-C-FF SERIES

Part 25CLEANOUTS

1. FLOOR CLEANOUTS:

1. CLEANOUTS SHALL HAVE LACQUERED CAST IRON BODIES WITH ANCHOR FLANGE, SECONDARY "O" RING TEST SEAL AND ADJUSTABLE COMBINED ACCESS COVER AND PLUG TOP ASSEMBLY WITH PRIMARY GASKET SEAL.

2. CLEANOUTS IN FINISHED FLOOR TO BE ROUND TOP OR C1000-5 3 SQUARE TOP WITH HEAVY DUTY POLISHED STAINLESS STEEL FINISH AND MAXIMUM LOAD RATING OF 7,499 LBS. EQUAL TO MIFAB C1000-R-3

3. CLEANOUTS IN UNFINISHED AREAS TO BE ROUND TOP WITH DUCTILE IRON COVER WITH MAXIMUM LOAD RATING OF 7,499 LBS. EQUAL TO MIFAB C1100-XR-4

4. CLEANOUTS IN LOTILITE AREAS TO BE (ROUND TOP) OR C1100-TS-3 (SQUARE TOP) WITH A HEAVY DUTY LOAD RATED POLISHED STAINLESS STEEL TOP. EQUAL TO MIFAB C1100-T-3

5. CLEANOUTS IN CARPETED AREAS TO BE WITH A HEAVY DUTY LOAD RATED POLISHED STAINLESS STEEL TOP AND STAINLESS STEEL CARPET MARKER. EQUAL TO MIFAB C1100-RC-3

6. SURFACE MEMBRANE CLAMP FOR PLENUM FLOORS TO BE LACQUERED CAST IRON CLEANOUT WITH ANCHOR FLANGE, WEEPHOLES, AND "RFC" 7" DIAMETER REINFORCED COMBINED STAINLESS STEEL COVER WITH PLUG AND SURFACE MEMBRANE CLAMP. EQUAL TO MIFAB SERIES C1100-RFC7-3-34

2. WALL CLEANOUTS:

1. CAST IRON LINE CLEANOUT TO BE LACQUERED CAST IRON CLEANOUT FERRULE WITH 1/2" (13) THICK DUCTILE IRON COMBINED COVER AND PLUG. EQUAL TO MIFAB SERIES C1450

2. CAST IRON STACK CLEANOUT TO BE LACQUERED CAST IRON CLEANOUT WITH LARGE ACCESS AREA AND THREADED PLUG. EQUAL TO MIFAB SERIES C1460

3. EXPANDABLE LINE CLEANOUT TO BE CLEANOUT PLUG WITH EXPANDABLE CLEANOUT. LINE CLEANOUT TO BE SUPPLIED IN CONJUNCTION WITH THE APPROPRIATE SIZE STAINLESS STEEL COVER AND VANDAL PROOF SCREW. EQUAL TO MIFAB SERIES C1440-RD

Part 26DRAINAGE WASTE AND VENT PIPING - PLASTIC, CAST IRON AND COPPER

1. DRAINAGE AND VENT LINES INSIDE BUILDING TO BE CAST IRON OR COPPER BELOW 2".

2. PVC PIPING MAY BE USED IN lieu OF CAST OR COPPER.

3. ALL PIPING IN PLENUM SPACES TO BE RATED FOR SUCH DUTY - PLASTIC PIPING IN PLENUM SPACES TO BE SYSTEM XFR PVC.

Part 27DOMESTIC WATER PIPING - COPPER

1. ABOVE GROUND: COPPER TUBE, HARD DRAWN, TYPE L: TO ASTM 8 88M.

2. BURIED OR EMBEDDED: COPPER TUBE, SOFT ANNEALED, TYPE K: TO ASTM 8 88M, IN LONG LENGTHS AND WITH NO BURIED JOINTS.

Part 28BALL VALVES

1. NPS 2 AND UNDER, SOLDERED;

2. TO ANSI/ASME B16.38, CLASS 150.

3. BRONZE BODY, CHROME PLATED BRASS BALL, PTFE ADJUSTABLE PACKING, BRASS GLOBE AND PTFE SEAT, STEEL LEVER HANDLE, WITH NPT TO COPPER ADAPTERS AS SPECIFIED SECTION 23.08.23.02 - VALVES - BRONZE.

Part 29PLUMBING FIXTURES

1. PLUMBING FIXTURES TO BE SUPPLIED AND INSTALLED BY MECHANICAL CONTRACTOR.

WC#1 - FLOOR MOUNTED TOILET - VITREOUS CHINA - TANK TYPE

ZURN ZK555-4 HIGH PERFORMANCE TWO PIECE WATER CLOSET, VITREOUS CHINA, AT 425 MM (16 23/32 IN) HEIGHT, ELONGATED BOWL, SIPHON JET ACTION, 76 MM (3 IN) FLUSH VALVE, 51 MM (2 IN) COMPLETELY GLAZED TRAPWAY, CHROME FINISH METAL HANDLE, BOLT CAPS, 4.8 L (1.28 US GAL) PER FLUSH, WATER PRESSURE RANGE 20 TO 80 PSI, ZH8824CRUKQ-8870-12-PC EXTRA HEAVY DUTY QUARTER TURN STOPS, DN 1/2 IN COMPRESSION, LOOSE KEY, VERTICAL FLEXIBLE STAINLESS BRAIDED HOSE OF 10 X 300 MM (3/8 X 12 IN), FLANGE, CHROME PLATED FINISH, Z59575S-EL HEAVY DUTY SOLID PLASTIC ELONGATED SEAT, OPEN FRONT, WITH COVER, MOLDED BUMPER GUARD, STAINLESS STEEL CHECK HINGES. (WHITE).

UR#1 - WALL MOUNTED URINAL - VITREOUS CHINA

ZURN ZK576S ECOVANTAGE URINAL - 0.125 GPF (0.5 LPS) TO 1.9 GPF (3.8 LPS) VITREOUS CHINA, WALL HUNG, INTEGRAL TRAP, WASHDOWN URINAL COMPLETE WITH 3/4" BACK SPUD CONNECTION, CONCEALED UNIVERSAL RETROFIT WALL BRACKET, 2" OUTLET CONNECTION AND VANDAL RESISTANT OUTLET STRAINER, ZEM6195AV-W51 - CONCEALED HARDWIRED SENSOR OPERATED URINAL FLUSH VALVE FOR 1.0 GPF (3.8 LPS)

LR# - WALL HUNG LAVATORY - BARRIER FREE - VITREOUS CHINA

Z5324 VITREOUS CHINA WALL HUNG LAVATORY FOR BARRIER-FREE APPLICATION, 581 X 514 MM (22 7/8 X 20 1/4 IN), BACKSPLASH, FRONT OVERFLOW, PRE-DRILLED FOR CONCEALED ARMS, DRILLED 3 HOLES AT 102 MM (4 IN) SPACING, Z81104-XL-3M POLISHED CHROME-PLATED LOW LEAD CAST BRASS FAUCET WITH INTEGRAL SHAVES, 102 MM (4 IN) CENTER, QUARTER TURN CERAMIC DISC CARTRIDGES, 102 MM (4 IN) VANDAL-RESISTANT COLOR-CODED METAL WRIST BLADE HANDLES, WITH 1.9 L/MIN. (0.5 USGPM) PRESSURE COMPENSATING AERATOR, ZH8824L-LRLKC-PC (2) EXTRA HEAVY DUTY QUARTER TURN STOPS, LOW LEAD, DN 1/2 PO COMPRESSION, LOOSE KEY, VERTICAL FLEXIBLE HOSES OF 10 X 300 MM (3/8 X 12 PO), FLANGES CHROME PLATED FINISH, Z8746-PC STRAINER OFFSET DRAIN ASSEMBLY, CAST BRASS BODY, 32 MM (1 1/4 IN), POLISHED CHROME FINISH, Z8700-PC-8D CAST BRASS ADJUSTABLE P-TRAP, 32 MM (1 1/4 IN) WITH DEEP WALL FLANGE AND CLEANOUT, CHROME PLATE FINISH, Z1231 BACK TO BACK CONCEALED WALL HUNG CARRIER, STEEL UPRIGHTS WITH WELDED FEET, CAST IRON ADJUSTABLE HEADERS, CONCEALED ARMS, ALIGNMENT TRUSS AND MOUNTING FASTENERS, Z8846-3-MT ANTIMICROBIAL PROTECTORS, RESISTS THERMAL TRANSFERS FOR P-TRAP, OFFSET DRAIN ASSEMBLY, STOP AND SUPPLY.

Part 30TESTING, ADJUSTING, AND BALANCING FOR HVAC SYSTEMS

1. CONTRACTOR TO CARRY SERVICES OF AIR BALANCING SUBCONTRACTOR IN TENDER PRICE FOR WORK OUTLINED IN CONTRACT DOCUMENTS.

2. SUBMIT AIR BALANCING REPORT TO ENGINEER FOR REVIEW AND ACCEPTANCE UPON COMPLETION OF BALANCING.

PLUMBING FIXTURE SCHEDULE

TAG	FIXTURE FLUSH NAME	COLD WATER PIPE SIZE	HOT WATER PIPE SIZE	SANITARY PIPE SIZE	VENT PIPE SIZE	NOTES	ACCESSORIES
WC	WATER CLOSET FLUSH TANK	1/2"	-	4"	1 1/2"		
U	URINAL	1"	-	2"	1 1/4"		
L	LAVATORY	1/2"	1/2"	1 1/4"	1 1/4"		
FD	FLOOR DRAIN	-	-	3"	1 1/2"		

Notes:

1.

Accessories:

A:

MINIMAL PIPE INSULATION - METALLIC PIPE

TEMP °F	DOMESTIC C.W.	DOMESTIC H.W.
PIPE SIZE	40-60 °F	141-200 °F
1/2" TO 3/4"	1"	1 1/2"
1" TO 1 3/4"	1"	1 1/2"
1 3/4" TO 3"	1"	2"
4" TO 8"	1"	2"
8" AND ABOVE	1"	2"

MINIMAL PIPE INSULATION - PEX PIPE

TEMP °F	DOMESTIC C.W.	DOMESTIC H.W.
PIPE SIZE	40-60 °F	141-200 °F
1/2" TO 3/4"	1"	1 1/2"
1" TO 1 3/4"	1"	1 1/2"
1 3/4" TO 3"	1"	1 1/2"
4" TO 8"	1"	1 1/2"
8" AND ABOVE	1"	2"

DIFFUSER AND GRILLE SCHEDULE

TAG	MANUFACTURER	DESCRIPTION	MODEL	OVERALL SIZE	NECK SIZE	NOTES	ACCESSORIES
1	NAILOR	ALUMINUM DOUBLE DEFLECTION SUPPLY AIR GRILLE	51DH	8"x4" 6"x6", 10"x4"	6"Ø	1	A
2	NAILOR	ALUMINUM FIXED 45° SINGLE DEFLECTION RETURN AIR GRILLE	514SH	8"x6" 10"x5", 12"x4"		1	A

Notes:

1. Coordinate connection to duct trunks on site. Confirm and coordinate all requirements.

Accessories:

A: Opposed blade damper

HEAT RECOVERY VENTILATOR SCHEDULE

TAG	MANUFACTURER	MODEL	E.S.P. in W.C.	SUPPLY AIRFLOW (CFM)	RETURN AIRFLOW (CFM)	MOTOR /POWER REQUIREMENTS	NOTES	ACCESSORIES
HRV#1	LIFEBREATH	ERV120D	0.3	130	130	610W 120V SP	1,2	A,B,C,D,E

Notes:

1. Fresh air and exhaust air ductwork to be insulated to unit.

2. Wall mounted as per manufacturers recommended installation instructions.

Accessories:

A: Back draft damper on exhaust port

B: Disconnect switch

C: 20/40/60 min. high speed override pushbutton

D: Provide programmable wall control with default Normal Speed/High Speed option to be only modes available.

E: Electric reheat coil 1.5 KW c/w discharge air temperature sensor, SCR controller, thermal cut out switch, fan relay, airflow sensor, etc.

ABBREVIATED EXPLANATION OF SCOPE OF WORK FOR PHASE 1. FOLLOW DETAILS IN DRAWINGS UNLESS OTHERWISE INDICATED.

1. INCLUDES EXTERIOR WALL, BUILDING ENVELOPE, ATTIC AND INSULATION UPGRADES.

2. INCLUDES ALL ROOFING REPLACEMENT.

3. INCLUDES ALL DOOR AND WINDOW REPLACEMENT. PROVIDE ELECTRICAL AND CONTROLS FOR POWER DOOR OPERATORS.

4. INCLUDES ELECTRICAL DISTRIBUTION, ALL EXTERIOR ELECTRICAL AND ALL BREAKERS. PROVIDE CIRCUITS AND MAKE READY FOR ANTICIPATED ADDITIONAL WORK AS SHOWN. FUTURE WORK INCLUDES BASEBOARD HEATING, INDOOR LIGHTING, INTERIOR RECEPTACLES, MECHANICAL DUCTWORK AND EQUIPMENT INCLUDING THE ERV, DUCT HEATER AND CONTROLS, HOT WATER TANK AND ASSOCIATED PIPING, UNIVERSAL WASHROOM CONNECTIONS/HARDWARE.

5. EXCLUDES INTERIOR CONSTRUCTION AND FINISHING WORK TO BE PERFORMED AT LATER DATE. PROTECT ALL INTERIOR FINISHES. SALVAGE AND ORGANIZE ALL DISTURBED WOOD TRIMS FOR FUTURE REINSTALLATION.

6. EXCLUDES ELECTRICAL FINISHING, PLUMBING, AND HVAC TO BE PERFORMED.

7. EXCLUDES SITEWORK AND LANDSCAPING. EXCEPTION: SOME EXCAVATION AND BACKFILL IS REQUIRED FOR PHASE 1 FOR ENVELOPE UPGRADES.

8. SEPTIC FIELD TO BE PERFORMED IN FUTURE DATE.

9. REFER TO ARCHITECTURAL DRAWINGS FOR SPECIFICATIONS FOR ADDITIONAL DETAILS AND REQUIREMENTS.

PLUMBING GENERAL NOTES:

1. INSTALLATION SHALL BE IN ACCORDANCE TO THE ONTARIO BUILDING CODE, AWWA STANDARDS/GUIDELINES AND ALL AUTHORITIES HAVING JURISDICTION.

2. CONTRACTOR SHALL VERIFY ALL TIE IN POINTS TO EXISTING PLUMBING, SANITARY AND VENT LINES PRIOR TO STARTING WORK.

3. CONTRACTOR TO PROVIDE ALL FITTINGS, ACCESSORIES, AND MATERIALS REQUIRED TO FACILITATE THE COMPLETION OF THE WORK INDICATED ON THE DRAWINGS AND SPECIFICATIONS.

4. REMOVE AND DISPOSE OF ALL UNUSED FIXTURES, EQUIPMENT, PIPING, VALVES, HANGERS/SUPPORTS ETC. UNLESS OTHERWISE NOTED.

5. ALL PIPING SHALL BE ROUTED ABOVE CEILING SPACE UNLESS OTHERWISE NOTED. ALL PIPING EXPOSED TO VIEW SHALL BE ROUTED AS HIGH AS POSSIBLE, TIGHT TO THE UNDERSIDE OF THE STRUCTURE AND WRAPPED IN PVC JACKET.

6. ALL PIPING SHALL BE CONCEALED IN WALL SPACE AND BEHIND FIXED FURNISHINGS (MILLWORK) UNLESS OTHERWISE NOTED.

7. SLEEVE OR CORE-DRILL FLOOR SLABS, WALLS ETC. AS REQUIRED FOR PIPING. VERIFY LOCATION OF ANY AND ALL STRUCTURAL BEAMS, JOISTS, ETC. PRIOR TO COMMENCEMENT OF DRILLING. CONFIRM AND COORDINATE ALL REQUIREMENTS AND CARRY ALL COSTS.

8. CONTRACTOR TO PROVIDE TEST PLUGS IN ALL PLUMBING AND SANITARY/VENT PIPING DURING CONSTRUCTION TO PREVENT ANY DEBRIS FROM ENTERING SYSTEM UNTIL FINAL PRODUCT IS INSTALLED.

9. WHEREVER FOUNDATIONS, EXTERIOR WALLS OR ROOFING SYSTEMS ARE PENETRATED FOR INSTALLATION OF SYSTEMS, THEY SHALL BE PATCHED TO MATCH EXISTING CONSTRUCTION AND SEALED WEATHER TIGHT.

10. ACCESS PANELS TO BE PROVIDED WHERE VALVES, CONTROL DEVICES, ETC. ARE CONCEALED WITHIN WALLS OR CEILING ASSEMBLIES. ALL DEVICES REQUIRING ACCESS FOR MAINTENANCE OR ADJUSTMENT SHALL BE MADE ACCESSIBLE.

11. ALL CONNECTIONS BETWEEN FERROUS AND NONFERROUS PIPING SHALL BE PROTECTED WITH AN ISOLATION, DIELECTRIC UNION/COUPLING.

12. FIRE-STOP ALL PENETRATIONS THROUGH RATED ASSEMBLIES WITH APPROVED FIRE STOPPING SYSTEM/MATERIALS.

13. PROVIDE A METHOD OF ISOLATION IE: BALL VALVES, FOR ALL DOMESTIC HOT AND COLD WATER BRANCHES OFF THE MAIN. ENSURE ADEQUATE ACCESS PROVIDED FOR ISOLATION DEVICES AS INDICATED ABOVE.

14. ALL PIPING, INSULATIONS, SANITARY AND VENT LINES RUN IN A PLENUM SPACE SHALL BE RATED FOR SUCH DUTY.

15. ALL FIXTURES AND DEVICES ASSOCIATED WITH DOMESTIC HOT AND COLD WATER TO MEET NSF/ANSI STANDARD 61 FOR LEAD CONTENT.

16. PRIME ALL FLOOR DRAINS TO NEAREST COLD WATER LINE COMPLETE WITH LEAD FREE TRAP PRIMER VALVE.

VENTILATION GENERAL NOTES:

1. ALL MECHANICAL EQUIPMENT AND INSTALLATIONS SHALL CONFORM TO THE REQUIREMENTS OF THE ONTARIO BUILDING CODE, AND ALL APPLICABLE CODES AND AUTHORITIES HAVING JURISDICTION.

2. ALL EQUIPMENT TO BEAR THE CSA AND ULC LABELS.

3. REMOVE AND LEGALLY DISPOSE OF ALL UNUSED EQUIPMENT, DUCTWORK, PIPING, VALVES, DIFFUSERS/GRILLES, HANGERS/SUPPORTS, CONTROL WIRING ETC. UNLESS OTHERWISE NOTED. ALL OPENINGS CREATED BY THE REMOVAL PROCESS TO BE PROPERLY SEALED AND MATCH ALL EXISTING RATINGS.

4. PRIOR TO PURCHASING ANY MATERIALS OR STARTING ANY WORK, CONTRACTOR SHALL FIELD VERIFY ALL EXISTING CONDITIONS. VERIFY ALL LOCATIONS, ROUTING, PENETRATIONS AND SIZES FOR DUCT, PIPE, EQUIPMENT ETC. SHOWN ON THE DRAWINGS OR AFFECTING THIS WORK AND SHALL REPORT ANY DEVIATIONS TO THE CONSULTANT.

5. CONTRACTOR SHALL COORDINATE ELECTRICAL CHARACTERISTICS AND REQUIREMENTS OF ALL MECHANICAL EQUIPMENT WITH ELECTRICAL DRAWINGS PRIOR TO ORDERING EQUIPMENT OR SUBMITTING SHOP DRAWINGS AND SHALL FURNISH EQUIPMENT WIRED FOR THE VOLTAGES SHOWN THEREIN.

6. ALL MECHANICAL EQUIPMENT REQUIRING ELECTRICAL POWER SHALL BE INSTALLED WITH A METHOD OF DISCONNECTION AT EACH PIECE OF EQUIPMENT. COORDINATE SWITCH TYPE (FUSED OR NON-FUSED) WITH EQUIPMENT CHARACTERISTICS, MANUFACTURER'S RECOMMENDATIONS AND ELECTRICAL DRAWINGS. DISCONNECT SWITCH TO BE SUPPLIED BY MECHANICAL DIVISION, INSTALLED AND WIRED BY ELECTRICAL DIVISION.

7. ALL REQUIRED CONTROL WIRING NOT SHOWN ON THE ELECTRICAL DRAWINGS SHALL BE INCLUDED AS PART OF THE MECHANICAL WORK. ALL CONTROL WIRING TO BE FITS PLENUM RATED WHERE RUNNING IN RETURN AIR PLENUMS.

8. UNLESS OTHERWISE NOTED, CONTROLS AND CONTROL WIRING REQUIRED FOR ALL MECHANICAL SYSTEMS SHALL BE CONNECTED AND INSTALLED BY THE MECHANICAL CONTRACTOR.

9. CONNECTIONS TO EQUIPMENT SHALL BE VERIFIED WITH MANUFACTURER'S CERTIFIED DRAWINGS, TRANSITIONS TO ALL EQUIPMENT SHALL BE VERIFIED AND PROVIDED FOR EQUIPMENT FURNISHED.

10. DUCT CONSTRUCTION INCLUDING GAUGES, THICKNESS, BRACING, REQUIREMENTS, ETC., SHALL BE IN ACCORDANCE WITH THE LATEST EDITION OF THE SMACNA HVAC DUCT CONSTRUCTION STANDARD AND ASHRAE GUIDELINES.

11. UNLESS OTHERWISE NOTED PROVIDE AIR TURNING VANES IN ALL 90 DEGREE RECTANGULAR DUCT.

12. DUCT SIZES AND ALL OPENINGS THROUGH BUILDING CONSTRUCTION SHALL SUIT EQUIPMENT FURNISHED. PROVIDE LINTELS AS REQUIRED AND CARRY ALL COSTS.

13. COORDINATE ALL DIFFUSER, GRILLE AND REGISTER LOCATIONS WITH ARCHITECTURAL REFLECTED CEILING PLANS AND EQUIPMENT OF ALL TRADES.

14. LOCATE ERV CONTROLS, THERMOSTATS AT 4'3" ABOVE FINISHED FLOOR UNLESS OTHERWISE NOTED. COORDINATE LOCATIONS WITH OTHER EQUIPMENT, FURNITURE, AND DOOR SWINGS.

15. ALL EQUIPMENT, DUCTWORK, ETC. SHALL BE SUPPORTED AS DETAILED, AS SPECIFIED AND AS PER SMACNA GUIDELINES. PROVIDE ADDITIONAL SUPPORTS AS REQUIRED TO PROVIDE A VIBRATION FREE INSTALLATION.

16. REFER TO TYPICAL DETAILS FOR PIPING AND INSTALLATION OF EQUIPMENT.

17. ACCESS PANELS IN DUCTWORK AND CEILING SHALL BE PROVIDED WHERE REQUIRED FOR OPERATIONS, BALANCING OR MAINTENANCE OF MECHANICAL EQUIPMENT. NOTE THAT WHERE REMOVABLE CEILING PANELS EXISTS, ACCESS DOORS/PANELS ARE NOT REQUIRED.

18. ALL DUCTWORK AND PIPING IS SHOWN SCHEMATICALLY. PROVIDE ALL TRANSITIONS, TURNING VANES, ELBOWS, FITTINGS ETC. TO ALLOW SMOOTH FLOWS.

19. VERIFY ALL FINISHES AND COLOURS WITH ARCHITECT PRIOR TO PURCHASING ANY/ALL DIFFUSERS, GRILLES, REGISTERS, LOUVRES AND DISTRIBUTION DEVICES.

20. PROVIDE FLEXIBLE DUCT CONNECTIONS ON ALL DUCTWORK CONNECTION TO EACH FAN, HRV, AIR HANDLING UNITS, AND FAN COIL UNITS AND ANY OTHER EQUIPMENT CAPABLE OF TRANSFERRING VIBRATIONS CONNECTED WITH DUCTWORK.

21. INTERRUPTIONS TO EXISTING SERVICES SHALL BE SCHEDULED FOR TIMES OTHER THAN NORMAL OPERATING HOURS (SUCH AS NIGHTS AND WEEKENDS). SUCH INTERRUPTIONS TO SERVICES SHALL NOT BE MADE WITHOUT THE PRIOR WRITTEN CONSENT OF THE OWNER'S REPRESENTATIVE AND PROPER COORDINATION WITH OTHER TRADES, PRE-WORK SHALL BE PERFORMED TO MAKE THE SHUTDOWN PERIOD AS BRIEF AS POSSIBLE.

22. FIRE STOP ALL PENETRATIONS THROUGH RATED ASSEMBLIES WITH FIRE STOP SYSTEM MATCHING WALL/FLOOR ASSEMBLY'S FIRE RATING. CONFIRM WITH ARCHITECTURAL DRAWINGS FOR EXACT RATINGS AND LOCATIONS.

23. LOCATE ALL OUTSIDE AIR INTAKES A MINIMUM OF 10'-0" FROM ANY/ALL PLUMBING VENTS AND EXHAUSTS AIR DISCHARGE LOCATIONS.

24. SLEEVE AND SEAL ALL PIPING PENETRATIONS THROUGH BUILDING PARTITIONS.

25. INSULATE ALL AIR INTAKE DUCTWORK AND ALL EXHAUST DUCTWORKS A MINIMUM OF 10' FROM EXHAUST LOUVER.

26. PROVIDE BALANCING DAMPERS FOR ALL NEW DUCTWORK THAT HAS BRANCH CONNECTIONS, ENSURE ADEQUATE ACCESS AVAILABLE IF NOT THEN ACCESS TO BE PROVIDED AS PART OF THE SCOPE OF WORK.

27. PROVIDE VIBRATION ISOLATION FOR ALL SUSPENDED EQUIPMENT.

MECHANICAL LEGEND

DOMESTIC COLD WATER

DOMESTIC HOT WATER

SANITARY ABOVE GRADE

SANITARY BELOW GRADE

VENT ABOVE GRADE

BALL VALVE

THERMOSTATIC MIXING VALVE

PIPE DROP

PIPE RISE

PLUMBING VENT RISER

DRAIN CONNECTION

BACKFLOW PREVENTOR

WATER METER

P-TRAP

UNION

FLOOR DRAIN

SANITARY CLEANOUT (IN FLOOR)

SANITARY CLEANOUT (IN WALL/CEILING)

FIRE EXTINGUISHER

EXISTING TO REMAIN

DUCT WITH DIMENSIONS, FIRST DIMENSION IS SIDE SHOWN

DUCT C/W INSULATION

DUCT SECTION UP

DUCT SECTION DOWN

BRANCH TAKE-OFF - C/W BALANCING DAMPER

WALL REGISTER - SUPPLY

WALL REGISTER - RETURN

MANUAL BALANCING DAMPER

IN DUCT HEATING COIL

DIFFUSER / GRILLE TYPE AND AIRFLOW
A = TYPE (EX = EXISTING), B = AIR FLOW

AIR TEMPERATURE SENSOR

ERV CONTROLLER

PUSH BUTTON AS NOTED

TRUE NORTH

PROJECT NORTH

GENERAL NOTES:

1. THESE DRAWINGS MUST BE CHECKED BY THE CUSTOMER OR CONTRACTOR. ANY ERRORS OR OMISSIONS MUST BE REPORTED IN WRITING TO SUPPA ENGINEERING PRIOR TO COMMENCEMENT OF CONSTRUCTION.

2. OWNER OR CONTRACTOR MUST CHECK AND VERIFY ALL SITE CONDITIONS BEFORE PROCEEDING WITH THE WORK.

3. ALL DIMENSIONS SHOWN ON THESE DRAWINGS MUST BE CHECKED AGAINST ALL OTHER PROJECT DRAWINGS. ALL DISCREPANCIES MUST BE REPORTED TO THE CONSULTANT BEFORE PROCEEDING WITH THE WORK.

4. FOR CONSTRUCTION PURPOSES, USE ONLY THE LATEST APPROVED DRAWINGS.

5. DO NOT SCALE THE DRAWINGS.

REVISION SCHEDULE

No.	DESCRIPTION	DATE
0	ISSUED FOR PERMIT AND TENDER.	AUG. 22, 2023

Project Status:

ISSUED FOR PERMIT AND TENDER

Seal:

LICENSED PROFESSIONAL ENGINEER
33-300
August 22, 2023
B. R. WENDVOER
100149107
PROVINCE OF ONTARIO

Suppa Engineering
592 Cassells Street
North Bay, ON P1B 3Z7
Tel: 705-707-2121
www.suppaengineering.ca

Project:

SOUTH RIVER TRAIN STATION

Address:
South River, Ontario

Drawing Title:

MECHANICAL PLUMBING & VENTILATION LEGEND, NOTES, SCHEDULES AND SPECIFICATION

Project No:

22-052

Drawn By: MBM

Date: Aug. 22, 23

Checked By: BW

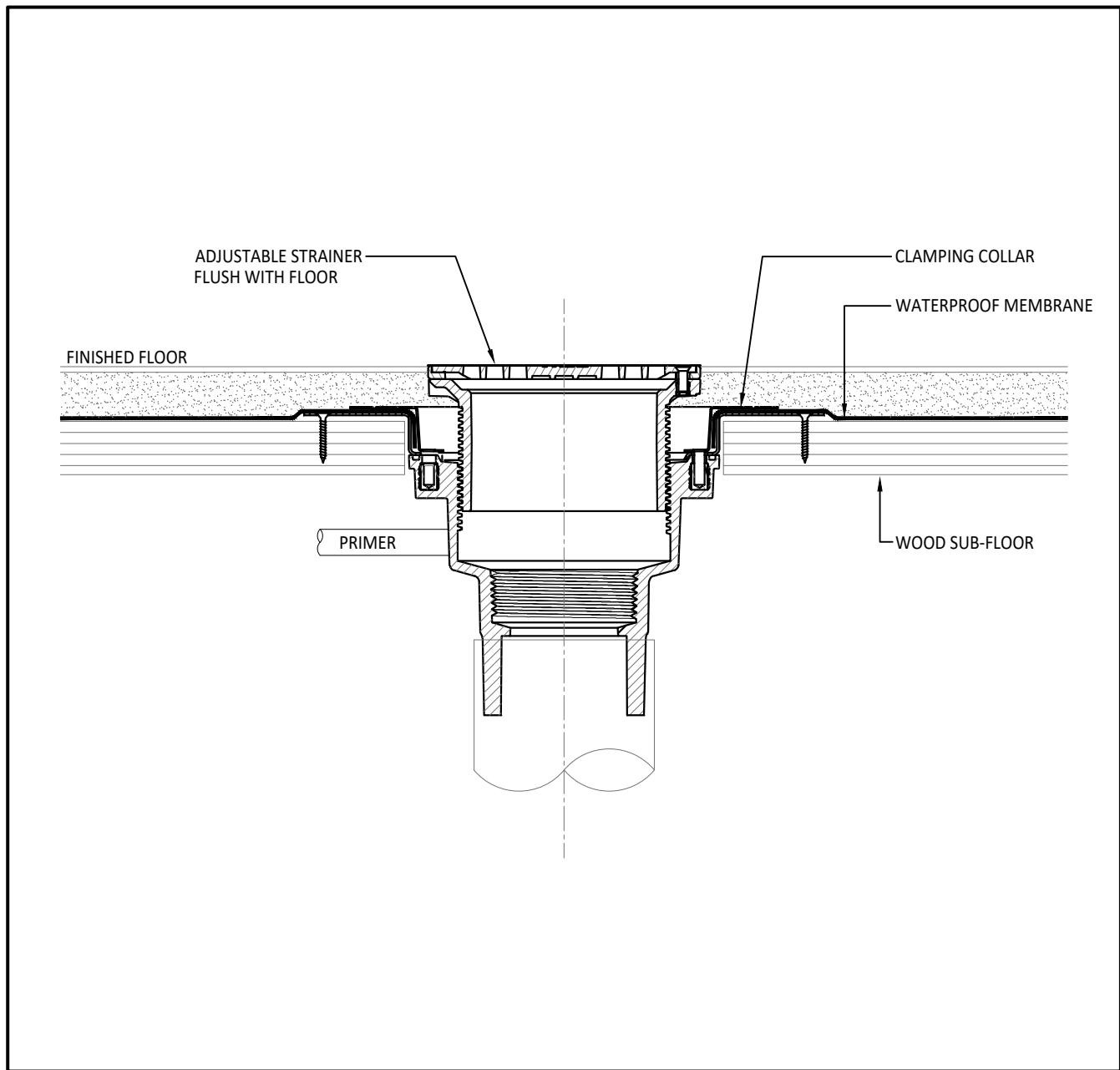
Scale: AS NOTED

Drawing No:

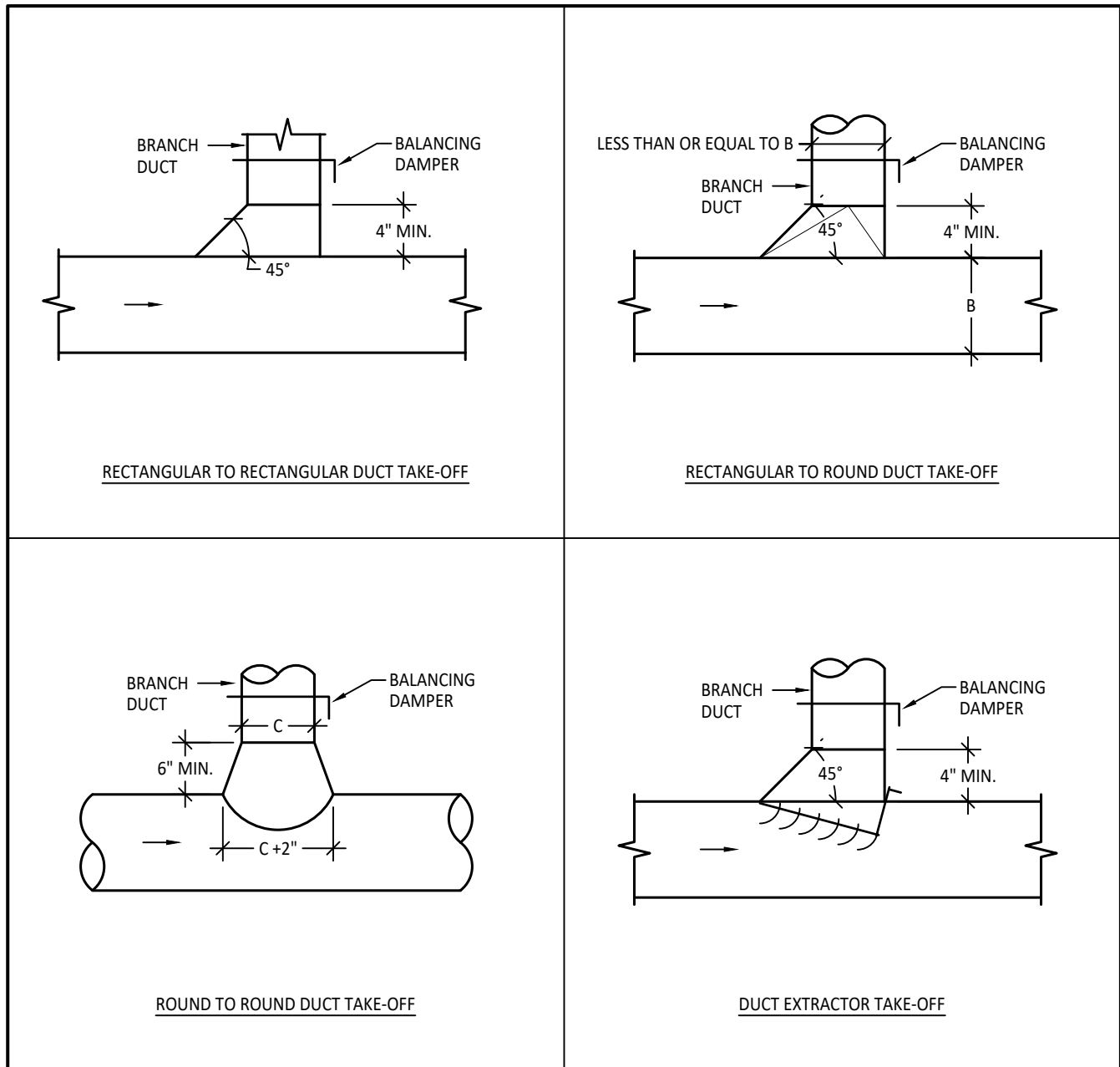
M101

Revision:

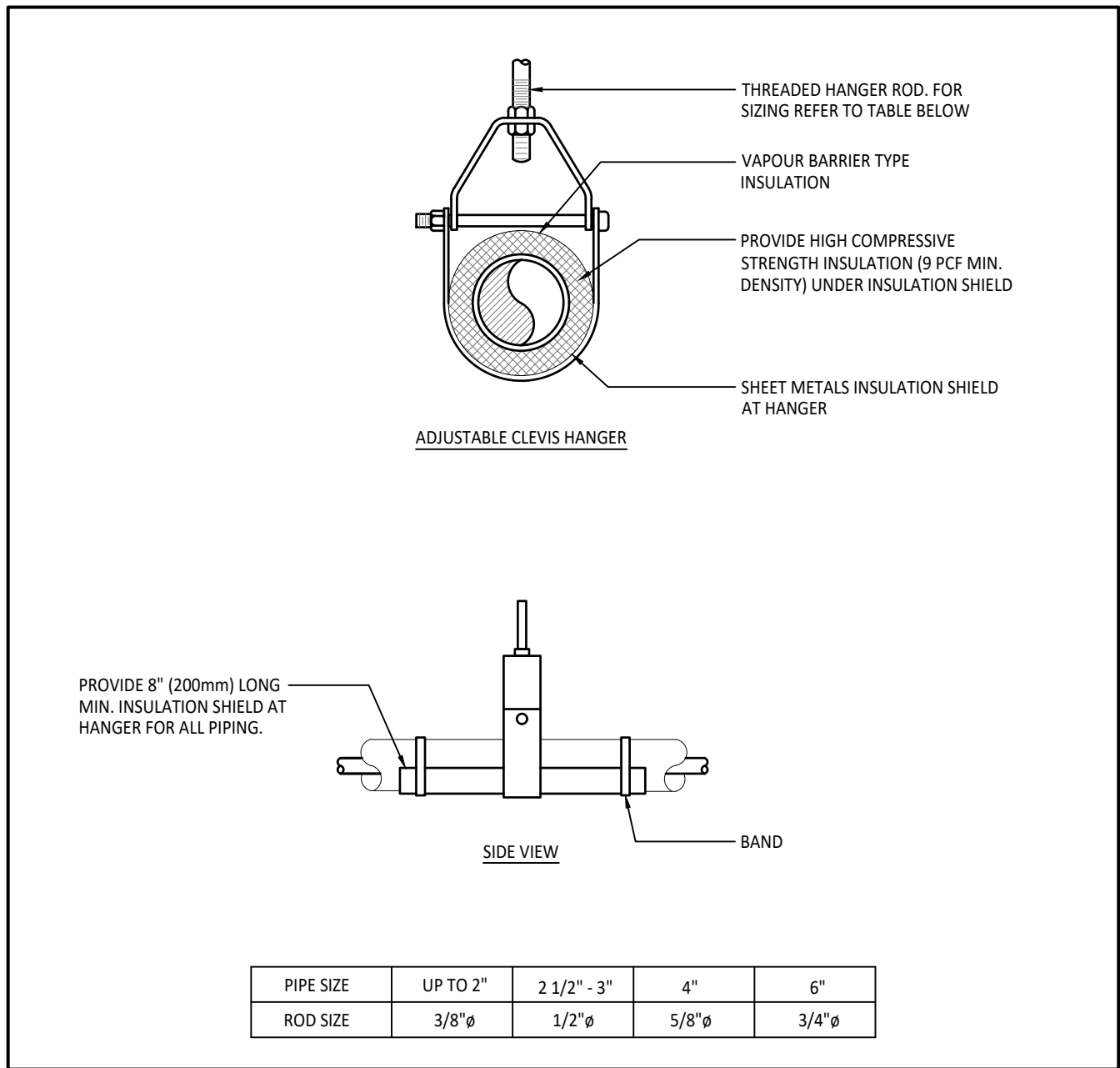
0



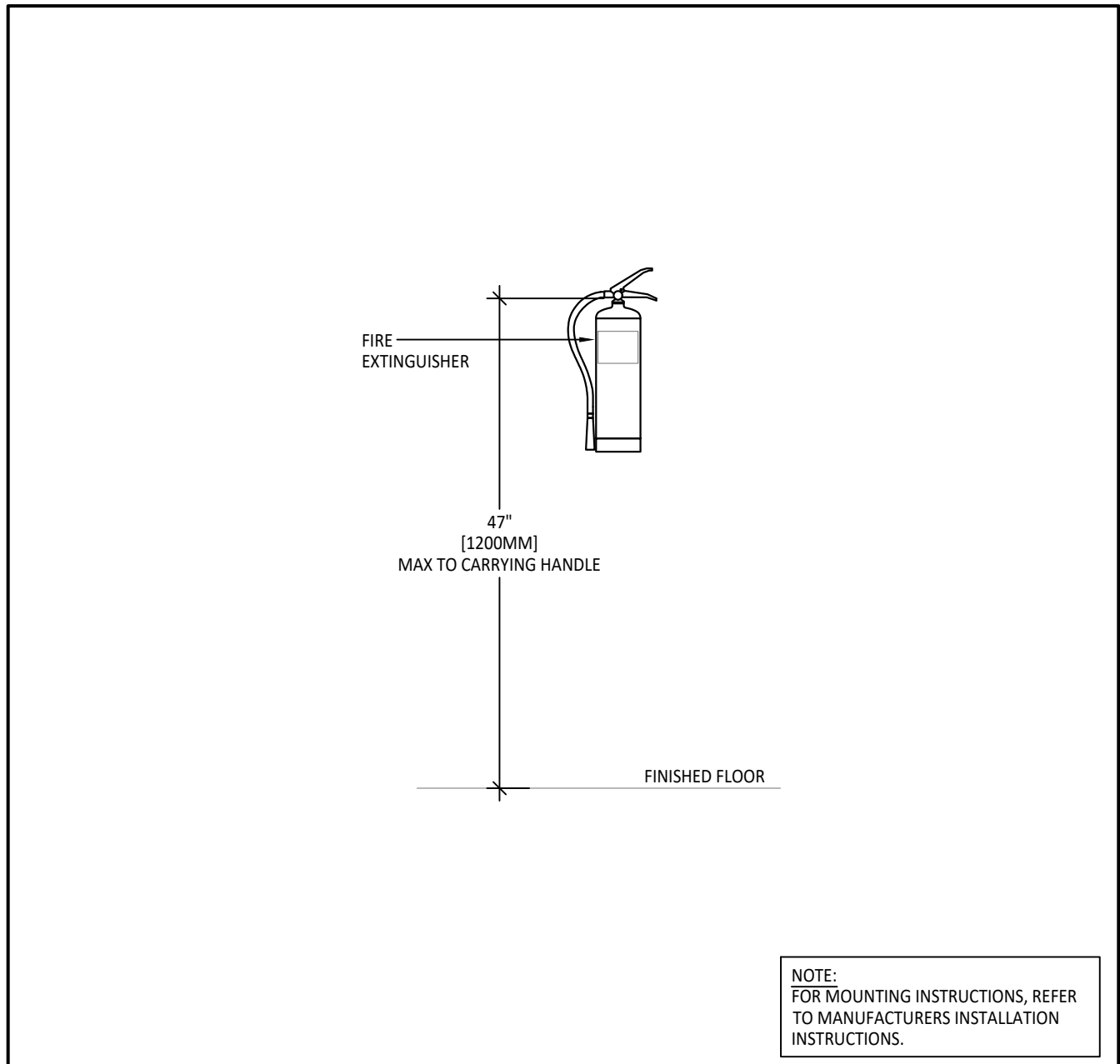
1 FLOOR DRAIN INSTALLATION DETAIL - WOOD FLOOR
SCALE: N.T.S.



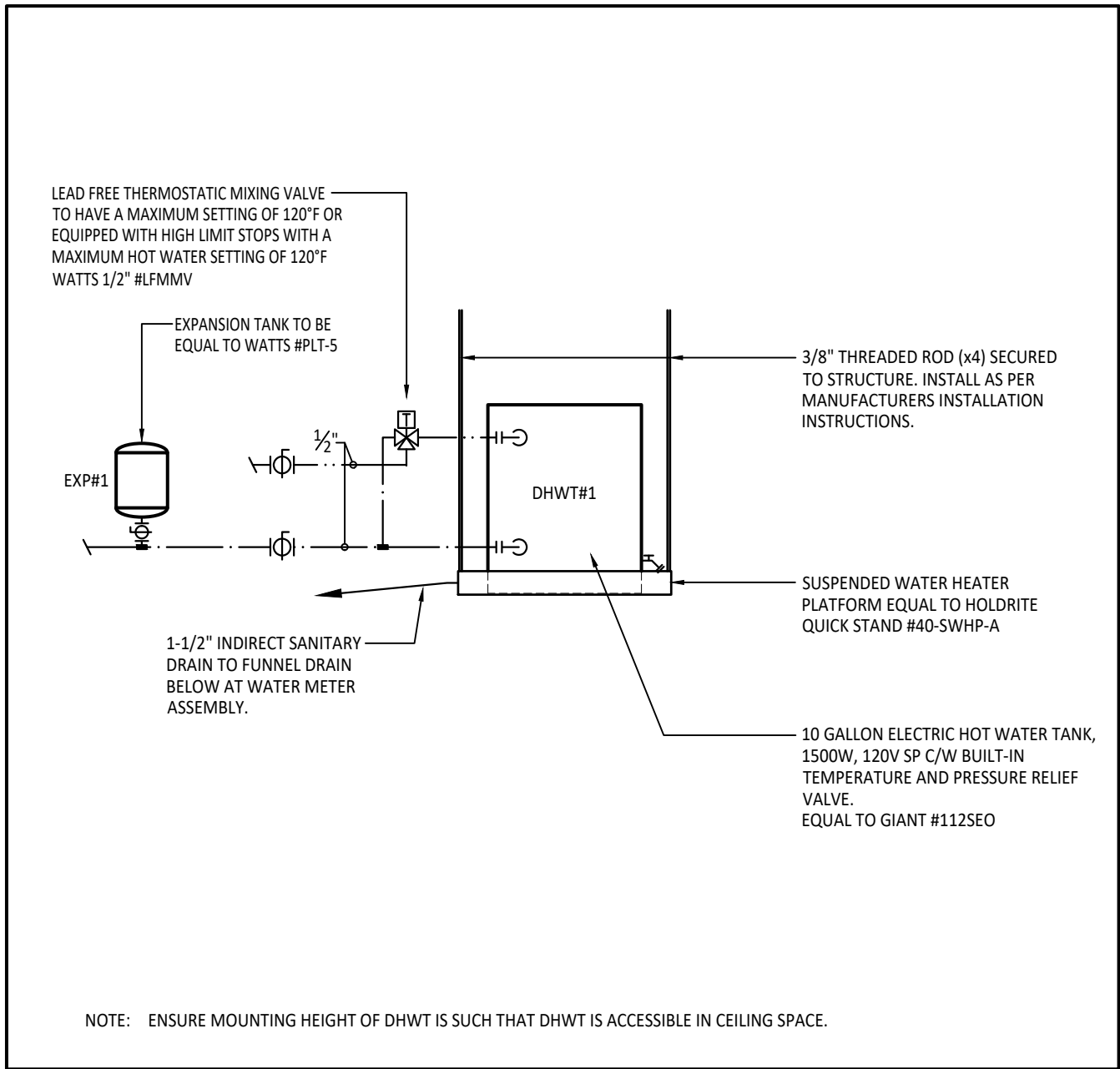
5 DUCT TAKE-OFF INSTALLATION DETAIL
SCALE: N.T.S.



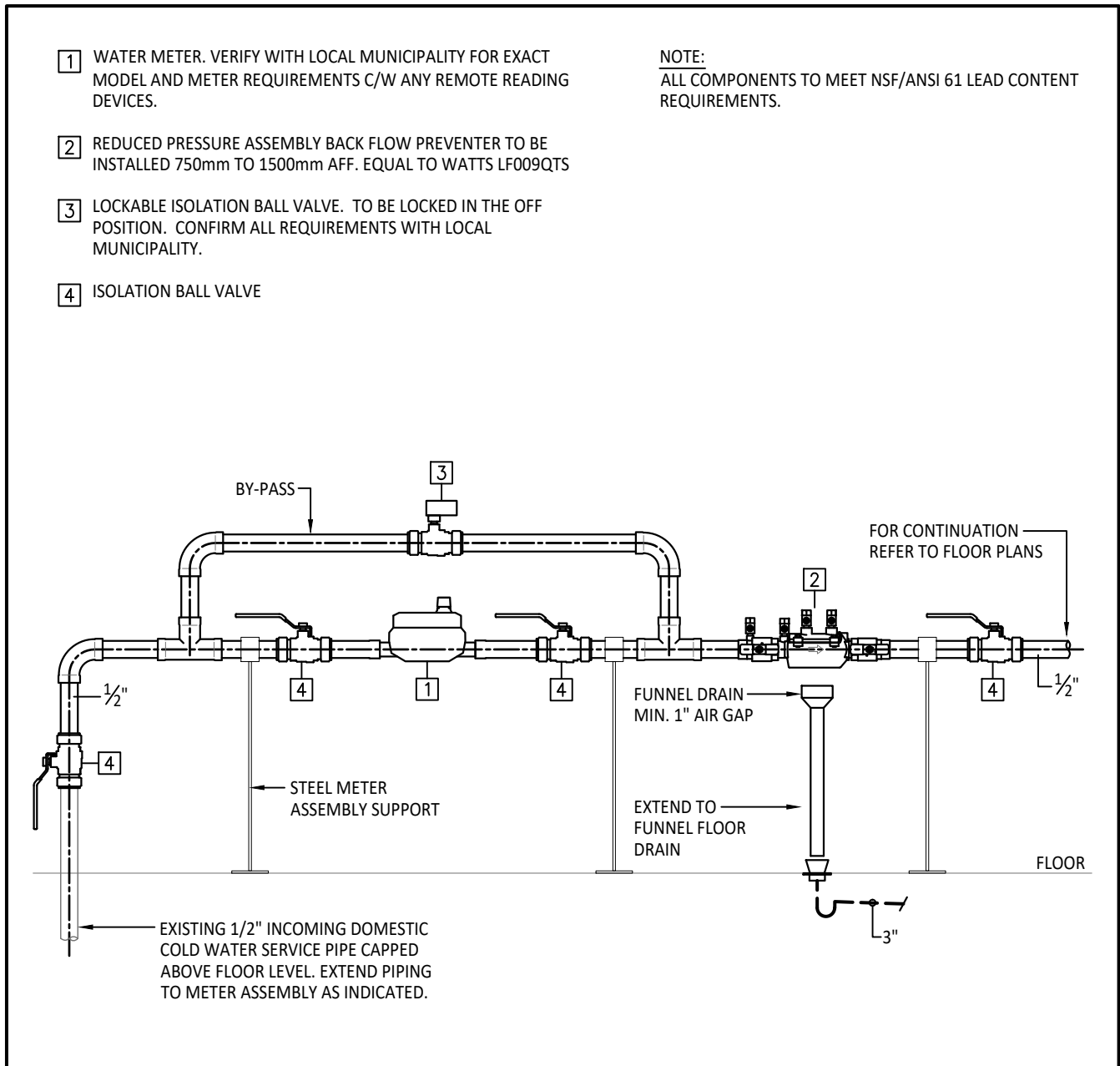
2 TYPICAL PIPE HANGER SUPPORT DETAIL
SCALE: N.T.S.



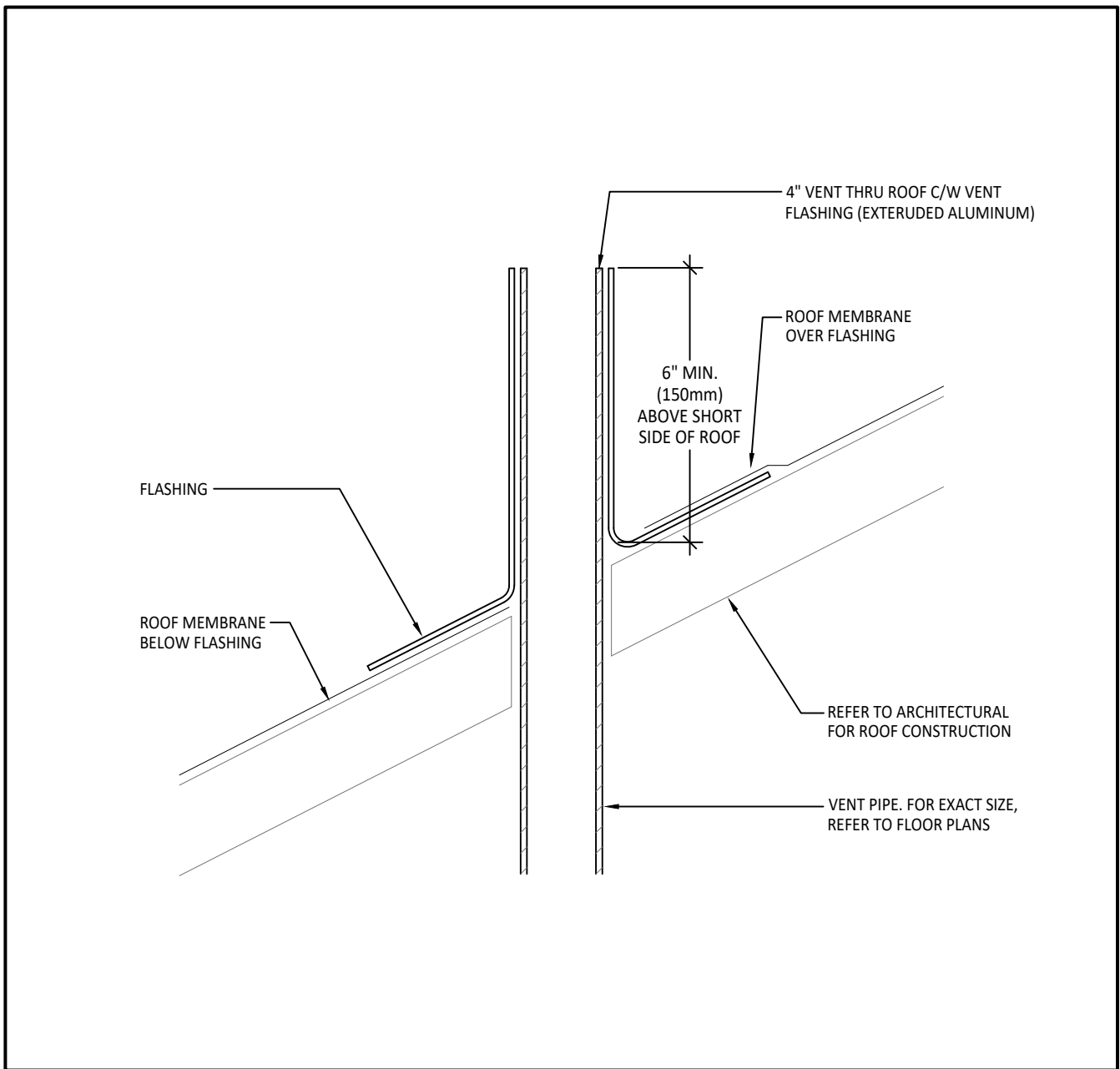
6 WALL MOUNTED FIRE EXTINGUISHER DETAIL
SCALE: N.T.S.



3 ABOVE CEILING - DOMESTIC HOT WATER TANK INSTALLATION
SCALE: N.T.S.



7 WATER METER ASSEMBLY DETAIL
SCALE: N.T.S.



4 VENT THRU SLOPED ROOF INSTALLATION DETAIL
SCALE: N.T.S.

↑

TRUE NORTH

↑

PROJECT NORTH

GENERAL NOTES:
1. THESE DRAWINGS MUST BE CHECKED BY THE CUSTOMER OR CONTRACTOR. ANY ERRORS OR OMISSIONS MUST BE REPORTED IN WRITING TO SUPPA ENGINEERING PRIOR TO COMMENCEMENT OF CONSTRUCTION.
2. OWNER OR CONTRACTOR MUST CHECK AND VERIFY ALL SITE CONDITIONS BEFORE PROCEEDING WITH THE WORK.
3. ALL DIMENSIONS SHOWN ON THESE DRAWINGS MUST BE CHECKED AGAINST ALL OTHER PROJECT DRAWINGS. ALL DISCREPANCIES MUST BE REPORTED TO THE CONSULTANT BEFORE PROCEEDING WITH THE WORK.
4. FOR CONSTRUCTION PURPOSES, USE ONLY THE LATEST APPROVED DRAWINGS.
5. DO NOT SCALE THE DRAWINGS.

REVISION SCHEDULE

No.	DESCRIPTION	DATE
0	ISSUED FOR PERMIT AND TENDER	AUG. 22, 2023

Project Status:

ISSUED FOR PERMIT AND TENDER

Seal:

LICENSED PROFESSIONAL ENGINEER
23-300
August 22, 2023
B. R. WENDOVER
100149707
PROVINCE OF ONTARIO

SUPPA
ENGINEERING

Suppa Engineering
592 Cassells Street
North Bay, ON P1B 3Z7
Tel: 705-707-2121
www.suppaengineering.ca

Project:

SOUTH RIVER
TRAIN STATION

Address:
South River, Ontario

Drawing Title:
MECHANICAL
PLUMBING & VENTILATION
DETAILS

Project No:

22-052

Drawn By: MBM

Date: Aug. 22, 23

Checked By: BW

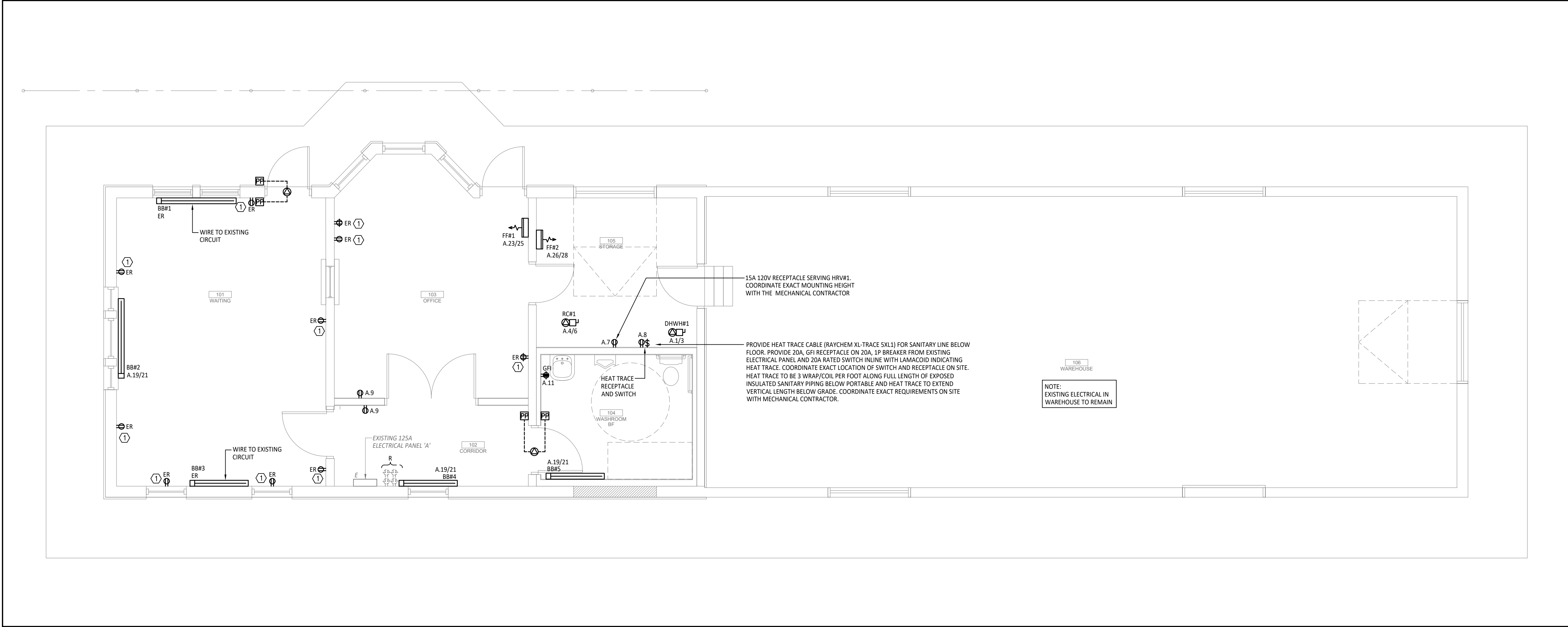
Scale: AS NOTED

Drawing No:

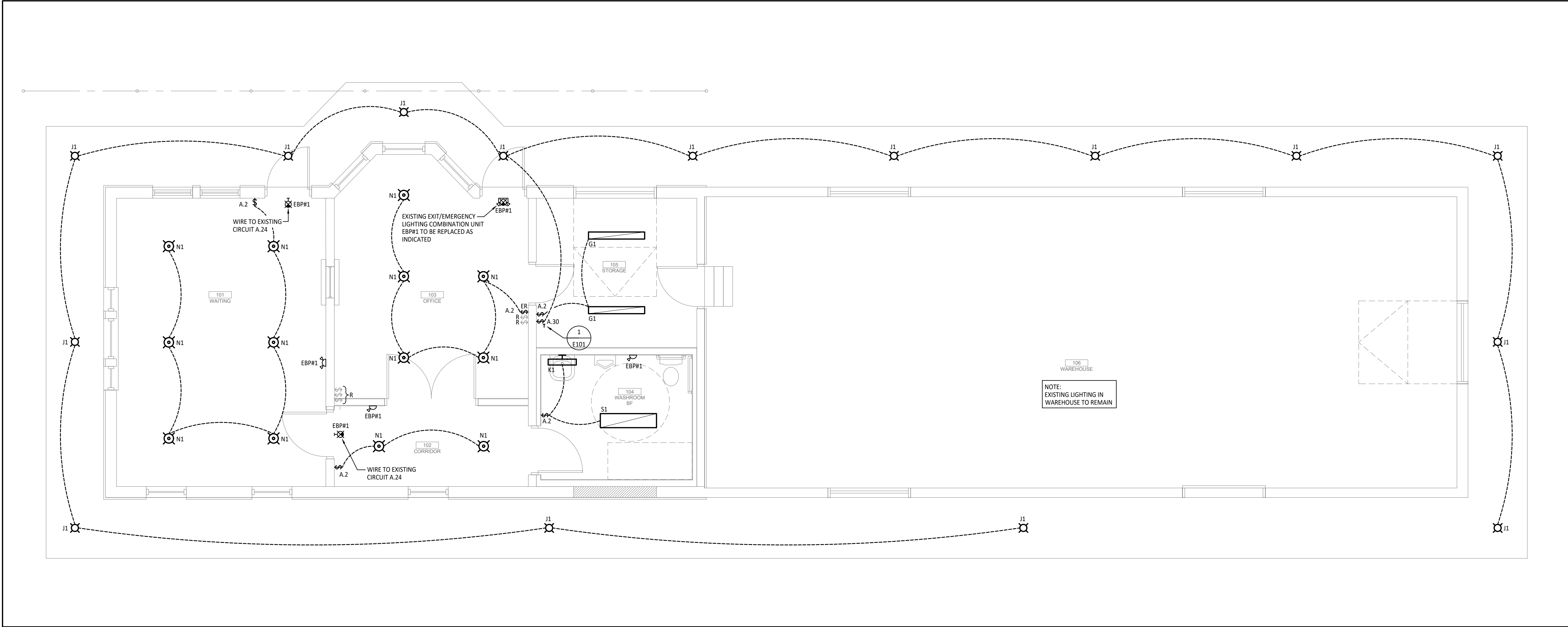
M103

Revision:

0



1 POWER FLOOR PLAN
SCALE: 1:50



2 LIGHTING FLOOR PLAN
SCALE: 1:50

ELECTRICAL DRAWING NOTES:

① EXISTING RECEPTACLES TO BE REPLACED WITH NEW C/W STAINLESS STEEL COVER PLATE. EXISTING WIRING AND CIRCUIT TO REMAIN. REFER TO SPECIFICATION FOR MORE DETAILS.

REVISION SCHEDULE

No.	DESCRIPTION	DATE
0	ISSUED FOR PERMIT AND TENDER	AUG. 22, 2023

TRUE NORTH

PROJECT NORTH

GENERAL NOTES:
1. THESE DRAWINGS MUST BE CHECKED BY THE CUSTOMER OR CONTRACTOR. ANY ERRORS OR OMISSIONS MUST BE REPORTED IN WRITING TO SUPPA ENGINEERING PRIOR TO COMMENCEMENT OF CONSTRUCTION.
2. OWNER OR CONTRACTOR MUST CHECK AND VERIFY ALL SITE CONDITIONS BEFORE PROCEEDING WITH THE WORK.
3. ALL DIMENSIONS SHOWN ON THESE DRAWINGS MUST BE CHECKED AGAINST ALL OTHER PROJECT DRAWINGS. ALL DISCREPANCIES MUST BE REPORTED TO THE CONSULTANT BEFORE PROCEEDING WITH THE WORK.
4. FOR CONSTRUCTION PURPOSES, USE ONLY THE LATEST APPROVED DRAWINGS.
5. DO NOT SCALE THE DRAWINGS.

Project Status:

ISSUED FOR PERMIT AND TENDER

Seal:

SUPPA ENGINEERING

Suppa Engineering
592 Cassells Street
North Bay, ON P1B 3Z7
Tel: 705-707-2121
www.suppaengineering.ca

Project:

SOUTH RIVER TRAIN STATION

Address:
South River, Ontario

Drawing Title:

**ELECTRICAL
POWER AND LIGHTING
FLOOR PLANS**

Project No:

22-052

Drawn By: MBM Date: Aug. 22, 23
Checked By: RS Scale: AS NOTED

Drawing No: **E102** Revision: 0